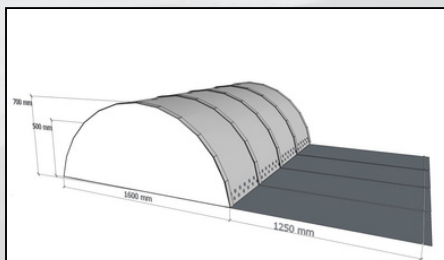


Structure and dimensions



Width of tunnel bottom 1600 mm	
Width of front flap 1300 mm	
Height Tubebarrier 700 mm	
Total weight per meter 6.5 Kg	
Storm flap back 200 mm	

Retaining height of the 70 cm high Barrier is 50 cm and the **guard height** is 20 cm. Function of this is additional buffer for wave stroke and waterflow. The Tubebarrier is also one of the few (temporary) Barriers who have the ability to stay stable during "overtopping".



Technical
Specification
Tubebarrier
70 cm



*Fighting Water
With Water*



**Dutch Water Prevention
The Netherlands**
www.dutchwaterprevention.com,
+31237992018



Storage and transport boxes



dimension	1200 x 1000 x 1000 mm (l x b x h)
Internal dimensions	1110 x 910 x 820 mm (L x B x H)
Volume	900 l
Weight	38 kg
Version	Fluid-proof plastic pallet box on 3 sleds.
Color	Gray
Material	HDPE food suitable
Bottom	Closed, reinforced
Side walls	Closed, with convex wall panels

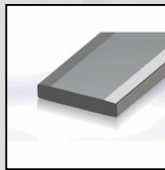
Drainage



Length	2700 mm
Inner size	9 mm
Outside size	12 mm

Perforated PVC hoses without reinforcement that allows redundant air and water to flow under the Tubebarrier away. These are already integrated into the Barrier.

Reinforcement Slats



Reinforcements slats aim to keep the "tunnel" up and to distribute the forces

Part No.	30CT052
Unit	Meter
Color	Gray
EI	12.7 NM ²
Length of maxi-100% min thickness	
Length	6 M
Material	Polyester/Glass
Shape	Rectangular
Exterior thickness	5 MM
Thickness top	5.5 MM
Weight	315 GM/M
Width	30 MM

Coupling with zipper

Tubebarrier sections are connected using a watertight combination of YKK special zippers and velcro flap.



PVC sailcloth

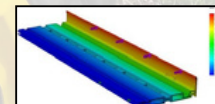
650 g/m ² , DIN EN ISO 2286-2, 19.1 oz./sq.yd., ASTM D-751.10	
2500/2500 N, 550 mm, DIN EN ISO	
Tensile strength 1221/V1, 320 / 300 lbs. / in., ASTM D-751, Procedure B	
250/250 N, DIN 53363, 35 / 35 lbs.,	
Tear strength ASTM D-751, (8" x 10") Specimen	
100 N/5 cm, PA 09.03 (intern), 11 lbs. /	
Adhesion in., ASTM D-751, RF Weld	
-40 °C / +70 °C, DIN EN 1876-1, PA 07.04	
Temperature resistance (intern), -40 °F / +158 °F, ASTM D-2136, PA 07.04 (intern)	

Fire behavior ISO 2795, 100 mm/min.

Ground Anchors



Tubebarrier uses universal ground anchors which function on nearly every surface. Each meter of Tubebarrier uses a kit containing 2 ground anchors, including 12 wedges, 4 pins and 4 wood wire bolts. This kit is delivered as a single item. And weighs in total + - 2kg per meter. The components are made of aluminum.



Calculations with FEM analysis simulation with 1700 Newton